



Turnitin Originality como ferramenta de apoio no IFES

Bruno Lancellotti

Serviços Profissionais e Educacionais
Turnitin América Latina



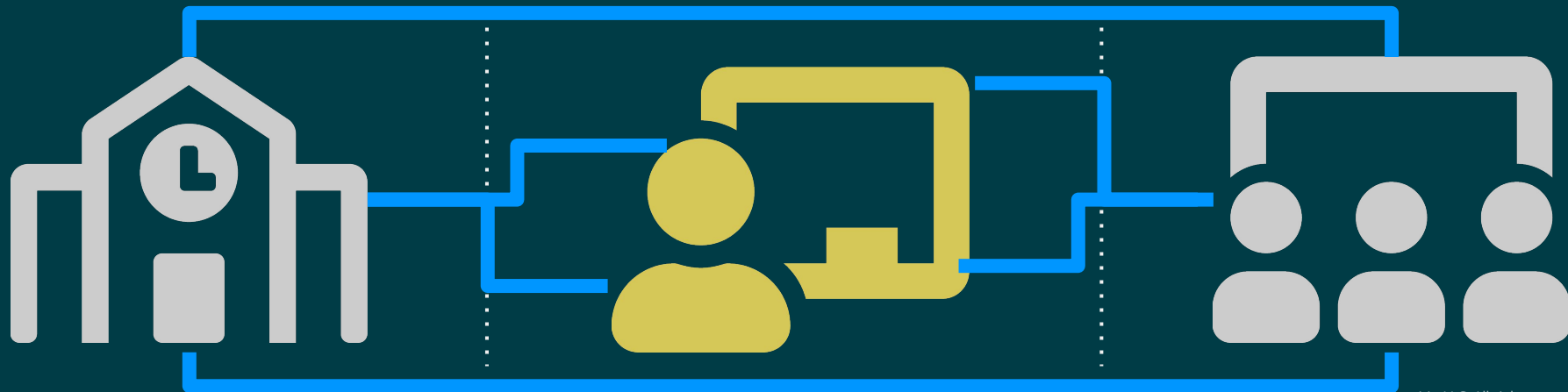
Na sessão de hoje...

- Revisamos rapidamente alguns aspectos teóricos sobre integridade acadêmica, similaridade e originalidade;
- Exploramos o Turnitin Originality nativo (<https://ifes.turnitin.com/>):
 - Envios pelo website nativo;
 - Envio via link direto;
 - Organização de pastas;
- Exploramos o relatório de similaridades com análise das fontes, dos filtros, além de marcas de alerta e detalhes do documento (metadados);
- Intro ao Moodle.

Integridade acadêmica

"O comprometimento com seis valores fundamentais: **honestidade**, **confiança**, **justiça**, **respeito**, **responsabilidade** e **coragem**."

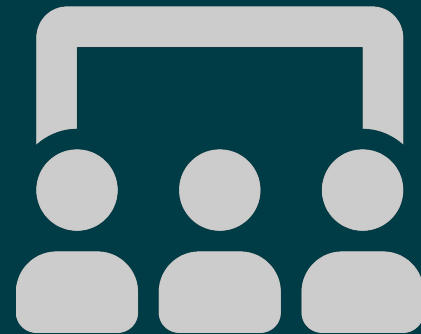
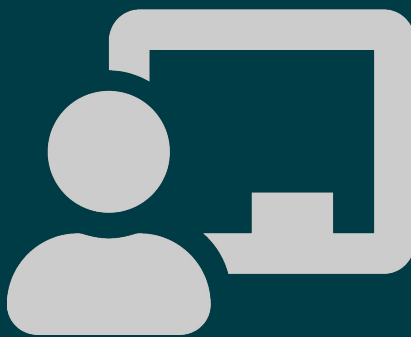
ICAI, The Fundamental Values of Academic Integrity, 2021



Integridade acadêmica

"Como pesquisador, o compromisso é pessoal – um pesquisador deseja ser confiável em sua comunidade. Do desenho do projeto à escrita dos resultados, as práticas de pesquisa devem obedecer a princípios éticos compartilhados e a normas de integridade acadêmica."

DINIZ; TERRA, 2014, apud Giacomazzo et Zuse "Vinculações entre autoria e plágio no âmbito da Pós-Graduação Stricto Sensu", Revista Cocar. V.14 N.30 Set./Dez./ 2020 p. 1-21





O que é
caracteriza
um trabalho
original?

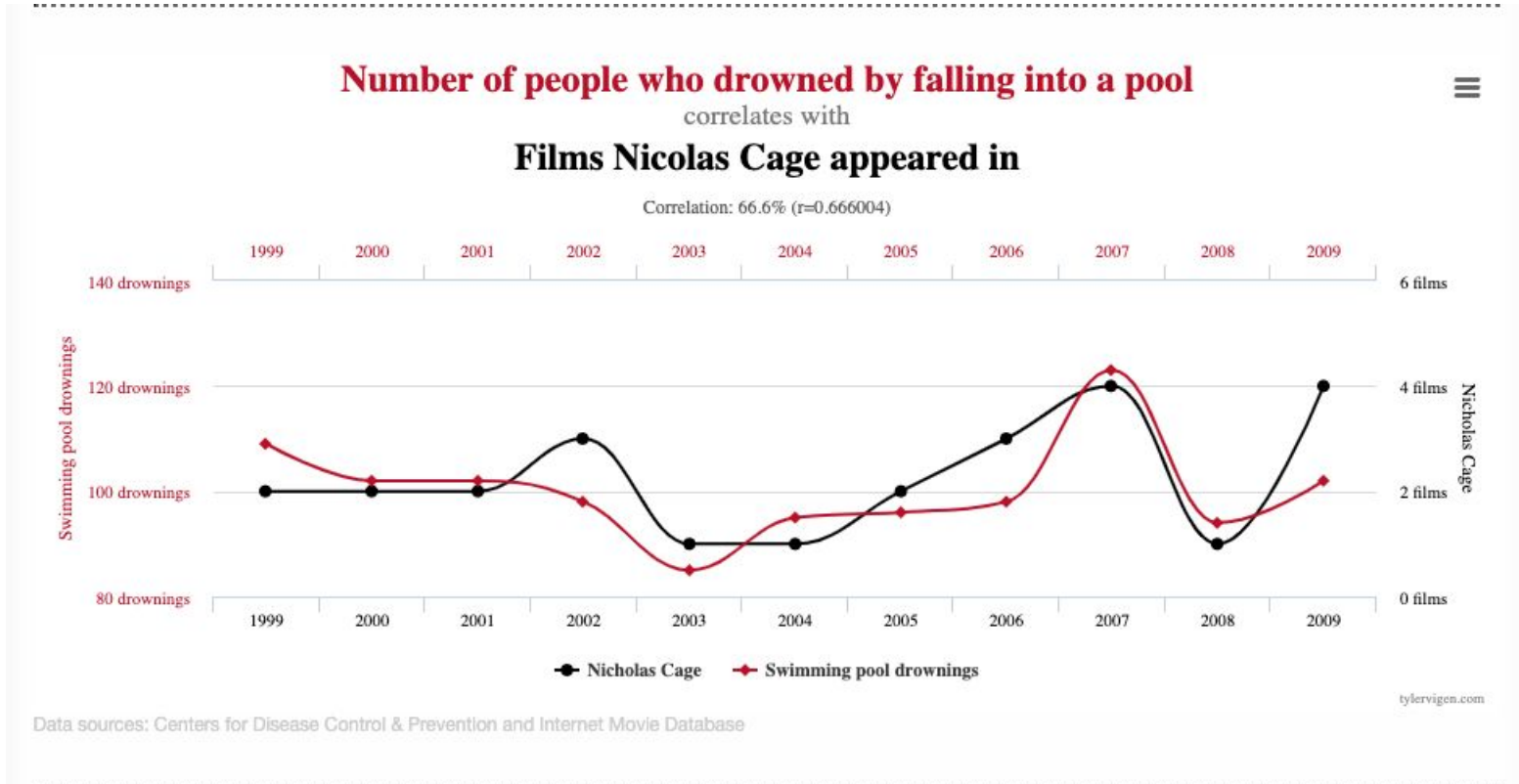
Originalidade =

- Ineditismo?
- Criatividade?
- Inventividade?

- De autoria
(origem)
rastreadável!



Livrai-nos do FFP







What can
**academic
misconduct
and
plagiarism**
look like?



#1 Clone

Submitting another's work, word-for-word, as one's own

SOURCE TEXT

A Natural Setting: A History of Exploration and Settlement in Yosemite Valley

Since its first discovery by non-indigenous people in the mid-nineteenth century, Yosemite Valley has held a special, even religious, hold on the American conscience because its beauty makes it an incomparable valley and one of the grandest of all special temples of Nature. While Yosemite holds a special grip on the western mind, perceptions about the Valley have evolved over time due to changing politics, migration patterns and environmental concerns as man has become more attuned to his relationship and impact on nature.

STUDENT WORK

A Natural Setting: A History of Exploration and Settlement in Yosemite Valley

Since its first discovery by non-indigenous people in the mid-nineteenth century, Yosemite Valley has held a special, even religious, hold on the American conscience because its beauty makes it an incomparable valley and one of the grandest of all special temples of Nature. While Yosemite holds a special grip on the western mind, perceptions about the Valley have evolved over time due to changing politics, migration patterns and environmental concerns as man has become more attuned to his relationship and impact on nature.



#2 CTRL+C

Contains significant portions of text from a single source without alterations

SOURCE TEXT

A Natural Setting: A History of Exploration and Settlement in Yosemite Valley

Since its first discovery by non-indigenous people in the mid-nineteenth century, Yosemite Valley has held a special, even religious, hold on the American conscience because its beauty makes it an incomparable valley and one of the grandest of all special temples of Nature. While Yosemite holds a special grip on the western mind, perceptions about the Valley have evolved over time due to changing politics, migration patterns and environmental concerns as man has become more attuned to his relationship and impact on nature.

STUDENT WORK

The Beautiful Yosemite Valley

From the time of its first discovery by non-indigenous people in the mid-nineteenth century Yosemite Valley has held a special, even religious, possession on the American conscience because its beauty makes it an incomparable valley and one of the grandest of all special temples of Nature. And Yosemite holds a special grip on the western mind, while perceptions about the Valley have evolved over time due to changing politics, migration patterns and environmental concern as man has become more attuned to his relationship and impact on nature.



#3 Find – Replace

Changing key words and phrases but retaining the essential content of the source

SOURCE TEXT

A Natural Setting: A History of Exploration and Settlement in Yosemite Valley

Since its first discovery by non-indigenous people in the mid-nineteenth century, Yosemite Valley has held a special, even religious, hold on the American conscience because its beauty makes it an incomparable valley and one of the grandest of all special temples of Nature. While Yosemite holds a special grip on the western mind, perceptions about the Valley have evolved over time due to changing politics, migration patterns and environmental concerns as man has become more attuned to his relationship and impact on nature.

STUDENT WORK

A Beautiful Setting in Yosemite

Since its first discovery by non-native people in the mid-19th century Yosemite Valley has held a special, even sacred, hold on the American psyche because its beauty makes it an incomparable valley and one of the grandest of all special temples of Nature. While Yosemite holds a special grip on the western mindset, perceptions about the Valley have evolved over time due to changing political movements, migration patterns and environmental issues as man has become more attuned to their relationship and impact on nature.



#4 Remix

Paraphrases from multiple sources, made to fit together

SOURCE TEXT

A Natural Setting: A History of Exploration and Settlement in Yosemite Valley

Since its first discovery by non-indigenous people in the mid-nineteenth century, Yosemite Valley has held a special, even religious, hold on the American conscience because its beauty makes it an incomparable valley and one of the grandest of all special temples of Nature. While Yosemite holds a special grip on the western mind, perceptions about the Valley have evolved over time due to changing politics, migration patterns and environmental concerns as man has become more attuned to his relationship and impact on nature.

STUDENT WORK

An Untouched View A History of Settlement and Change in Yosemite Valley

The first non-natives to see Yosemite Valley were probably members of the mid-nineteenth century Joseph Walker Party, who crossed the Sierra Nevada from East to West. The first descriptions of Yosemite came almost 20 years later. From the start, the valley has been renowned for its natural beauty, and highly regarded as the center-piece of Yosemite National Park, attracting visitors from around the world. While Yosemite holds a special grip on the western mind, perceptions about the Valley have evolved over time due to changing politics, migration patterns and environmental concerns as man has become more attuned to their relationship and impact on nature.



#5 Recycle

Borrows generously from the writer's previous work without citation

SOURCE TEXT

A Natural Setting: A History of Exploration and Settlement in Yosemite Valley

Since its first discovery by non-indigenous people in the mid-nineteenth century, Yosemite Valley has held a special, even religious, hold on the American conscience because its beauty makes it an incomparable valley and one of the grandest of all special temples of Nature. While Yosemite holds a special grip on the western mind, perceptions about the Valley have evolved over time due to changing politics, migration patterns and environmental concerns as man has become more attuned to his relationship and impact on nature.

STUDENT WORK

Ecology 201

An Unnatural Expectation: The Impact of Exploration and Settlement in Yosemite Valley

From its first discovery by the Ahwahnechee in the mid-nineteenth century Yosemite Valley has held a unique, even religious, hold on the American conscience because its beauty makes it an incomparable valley and one of the grandest of all special temples of Nature. While Yosemite holds a special grip on the western mind, perceptions about the Valley have evolved over time reflecting changing politics, human migration patterns and the rise of environmental concerns as man has become more attuned to his relationship and impact on nature.



#6 Hybrid

Combines perfectly cited sources with copied passages without citation

SOURCE TEXT

A Natural Setting: A History of Exploration and Settlement in Yosemite Valley

Since its first discovery by non-indigenous people in the mid-nineteenth century, Yosemite Valley has held a special, even religious, hold on the American conscience because its beauty makes it an incomparable valley and one of the grandest of all special temples of Nature. While Yosemite holds a special grip on the western mind, perceptions about the Valley have evolved over time due to changing politics, migration patterns and environmental concerns as man has become more attuned to his relationship and impact on nature.

STUDENT WORK

A Natural Setting A History of Exploration and Settlement in Yosemite Valley

Since its first discovery by non-indigenous people in the mid-nineteenth century, Yosemite Valley has held a special, even religious, hold on the American conscience because its beauty makes it an incomparable valley and one of the grandest of all special temples of Nature. "Native Americans have lived in the Yosemite region for as long as 8,000 years. The first people that we have record of was a band of Native Americans that called the Valley "Ah-wah-nee" and themselves the Ahwahnechee."¹ While Yosemite holds a special grip on the western mind, perceptions about the Valley have evolved over time due to changing politics, migration patterns and environmental concerns as man has become more attuned to his relationship and impact on nature.

¹ "Yosemite Valley," Wikipedia. Wikipedia. 20 Apr. 2012.
<http://en.wikipedia.org/wiki/Yosemite_Valley>



#7 Mashup

Mixes copied material from multiple sources

SOURCE TEXT

A Natural Setting: A History of Exploration and Settlement in Yosemite Valley

Since its first discovery by non-indigenous people in the mid-nineteenth century, Yosemite Valley has held a special, even religious, hold on the American conscience because its beauty makes it an incomparable valley and one of the grandest of all special temples of Nature. While Yosemite holds a special grip on the western mind, perceptions about the Valley have evolved over time due to changing politics, migration patterns and environmental concerns as man has become more attuned to his relationship and impact on nature.

STUDENT WORK

A Natural Setting A History of Exploration and Settlement in Yosemite Valley

Since its first discovery by non-indigenous people in the mid-nineteenth century Yosemite Valley has held a special, even religious, hold on the American conscience. The work of Ayres gave easterners an appreciation for Yosemite Valley and started a move-ment to preserve it. While Yosemite holds a special grip on the western mind, perceptions about the Valley have evolved over time due to changing politics, migration patterns and environmental concerns as man has become more attuned to their relationship and impact on nature. The 1849 California Gold Rush led to conflicts between miners and natives, and the volunteer Mariposa Battalion was formed by the state of California as a punitive expedition against natives in the Yosemite area.



#8 404 Error

Includes citations to non-existent or inaccurate information about sources

SOURCE TEXT

A Natural Setting: A History of Exploration and Settlement in Yosemite Valley

Since its first discovery by non-indigenous people in the mid-nineteenth century, Yosemite Valley has held a special, even religious, hold on the American conscience because its beauty makes it an incomparable valley and one of the grandest of all special temples of Nature. While Yosemite holds a special grip on the western mind, perceptions about the Valley have evolved over time due to changing politics, migration patterns and environmental concerns as man has become more attuned to his relationship and impact on nature.

STUDENT WORK

Perceived Beauty: Man's Nature Exploration and Settlement in Yosemite Valley

"Since its first discovery by the Joseph Walker Party in the mid-nineteenth century!" "Yosemite Valley has held a special, even religious, hold on the American conscience because its beauty makes it an incomparable valley and one of the grandest of all special temples of Nature." "While Yosemite holds a special grip on the western mind, perceptions about the Valley have evolved over time due to changing politics, migration patterns and environmental concerns as man has become more attuned to their relationship and impact on nature."³

¹ For an insightful discussion of Walker's expedition, including an extended description of their first sight of Yosemite Valley, see Walker's original piece in *The Golden Times*, May 5, 1833; p. 4. Print.

² Bloom, H. "Aesthetics of the Found: The 'Nature' of the Natural." *Aesthetics and the Found*. November 2000: 18-22. Print.

³ Huang et al. "Politics, Policy, and the Environment." *Nature and Society*. 25.3 (1997) : 127-53. Print.



#9 Aggregator

Includes proper citation to sources but the paper contains almost no original work

SOURCE TEXT

A Natural Setting: A History of Exploration and Settlement in Yosemite Valley

Since its first discovery by non-indigenous people in the mid-nineteenth century, Yosemite Valley has held a special, even religious, hold on the American conscience because its beauty makes it an incomparable valley and one of the grandest of all special temples of Nature. While Yosemite holds a special grip on the western mind, perceptions about the Valley have evolved over time due to changing politics, migration patterns and environmental concerns as man has become more attuned to his relationship and impact on nature.

STUDENT WORK

A Natural Setting: A History of Exploration and Settlement in Yosemite Valley¹

Yosemite Valley was first sighted by non-Indians in 1833 by Joseph Rutherford Walker and his group of explorers.² Yosemite has a long and diverse cultural history that helped to shape the region, country, and even the world.³ While Yosemite holds a special grip on the western mind, perceptions about the Valley have evolved over time due to changing politics, migration patterns and environmental concerns as man has become more attuned to their relationship and impact on nature.⁴

¹ Harrick, C. "A Natural Setting." *Nature and its Discontents* 23.1 (1996) : 41-50. *Print*.

² "History of Yosemite," *Yosemitegold.com Ace & Friends*, n.d. *Web*. 24 Apr. 2012. <<http://www.yosemitegold.com/yosemite/history.html>>

³ "Yosemite National Park Cultural History," *Yosemitepark.com DNC Parks and Resorts at Yosemite, Inc.*, n.d. *Web*. 24 Apr. 2012. <<http://www.yosemitepark.com/cultural-history.aspx>>

⁴ Harrick, C. "A Natural Setting," p. 41.



#10 Re-Tweet

Includes proper citation, but relies too closely on the text's original wording and/or structure

SOURCE TEXT

A Natural Setting: A History of Exploration and Settlement in Yosemite Valley

Since its first discovery by non-indigenous people in the mid-nineteenth century, Yosemite Valley has held a special, even religious, hold on the American conscience because its beauty makes it an incomparable valley and one of the grandest of all special temples of Nature. While Yosemite holds a special grip on the western mind, perceptions about the Valley have evolved over time due to changing politics, migration patterns and environmental concerns as man has become more attuned to his relationship and impact on nature.

STUDENT WORK

A History of Exploration and Settlement in Yosemite Valley

From its earliest discovery by non-indigenous people in the mid-nineteenth century Yosemite Valley has held a spiritual hold on the American conscience; its beauty is incomparable and has been held up as one of the grandest of all special temples of Nature. While Yosemite has a special grip on the western mind, impressions about the Valley have evolved over time, shaped by changing politics, migration patterns and environmental concerns as mankind has become more attuned to its relationship and impact on nature.¹

¹ Harrick, C. "A Natural Setting." *Nature and its Discontents* 23.1 (1996) : 41-50. Print.



Pensamento Original

Quando alguém envia tarefas que são de sua própria autoria, compostas de ideias originais, baseadas em fontes atribuídas.



Cópia Entre Estudantes

Trabalhar com outros alunos em uma tarefa destinada à avaliação individual.



Plágio Cópia e Cola

Copiar e colar conteúdo sem a atribuição adequada.



Autoplágio

Reutilizar um trabalho publicado ou submetido anteriormente, sem a devida atribuição.



Plágio Mosaico

Agrupar frases e textos de várias fontes em seu próprio trabalho, ajustando as sentenças sem aspas ou atribuição.



Software para Modificação de Textos

Utilizar conteúdo escrito por outro autor e adaptá-lo com apoio de softwares que traduzem e parafraseiam, alterando a ordem do texto ou substituindo palavras por sinônimos, para driblar a detecção de plágio.



Compra e Venda de Trabalhos

Envolver um terceiro, geralmente mediante pagamento, para concluir uma tarefa e então apresentá-la como trabalho original.



Plágio Inadvertido

Esquecer de citar ou de citar adequadamente uma fonte, ou paráfrase não intencional.



Paráfrase Sem Atribuição

Reformular as ideias de uma fonte sem a devida atribuição.



Plágio de Código

Copiar ou adaptar o código-fonte sem permissão e atribuição ao criador original.



Plágio de Fonte

Fornecer informações imprecisas ou incompletas sobre fontes que não podem ser encontradas.



Modificação Manual do Texto

Manipulação de texto com a intenção de driblar o software de detecção de plágio.



Plágio de Dados

Falsificar, fabricar dados ou apropriar-se indevidamente do trabalho de outra pessoa, colocando em risco a reputação de um pesquisador, instituição ou editor.



O que é plágio acadêmico?

**“Apresentar como de autoria própria
uma ideia ou obra literária, científica
ou artística de outrem”**

Plagiar. “Michaelis Dicionário Brasileiro de Língua Portuguesa”. Disponível em:
<https://michaelis.uol.com.br/moderno-portugues/busca/portugues-brasileiro/plagiar/>

Usar **palavras, ideias** ou **produtos**

Atribuível a uma pessoa ou fonte **identificável**

Sem dar crédito à fonte de onde foi obtido

Em uma situação em que a **autoria original** é legitimamente esperada

Com a finalidade de obter crédito, **benefício** ou lucro

Usar **palavras, ideias** ou **produtos**

Atribuível a uma pessoa ou fonte **identificável**

Sem dar crédito à fonte de onde foi obtido

Em uma situação em que a **autoria original** é legitimamente esperada

Com a finalidade de obter crédito, **benefício** ou lucro

Quais são as principais **reasons** pelas quais os estudantes correm o **risco de plagiar**?

A aprendizagem é um processo.

Tenho mesmo que fazer isso?

Como faço isso?

Os especialistas e eu **estamos de acordo** (é *quase* minha própria ideia!)

Preciso tirar uma **nota** excelente ou reprovado.

Não **entendi**.

De onde tirei essa parte?

Não vou conseguir entregar tudo o que tenho para fazer.



"O plágio é assunto antigo e sua prática vem aumentando, entre outros fatores, em virtude do desenvolvimento tecnológico."

(KROKOSCZ, Revista Brasileira de Educação v. 16 n. 48 set.-dez. 2011, disponível em <https://www.scielo.br/pdf/rbedu/v16n48/v16n48a11>)

Prevenção



Qual caminho tomar?

Deteção



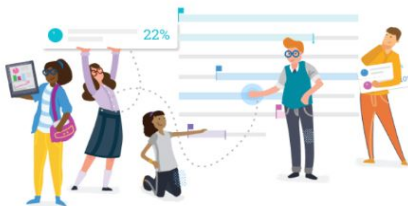
Bem-vindo a Turnitin!

noreply@turnitin.com <noreply@turnitin.com>
Reply-To: noreply@turnitin.com
To: blancellotti@turnitin.com

Fri, Apr 9, 2021 at 10:17 AM

**Bem-vindo à equipe do Turnitin!**

Agora você faz parte de uma comunidade comprometida com a integridade acadêmica



Olá, Bruno,

Você foi adicionado à conta do Turnitin da tii-pesdemo-pt-br'.

Agora você tem acesso a relatórios intuitivos, fornecendo correspondências de texto e pontuações de similaridade indicativas.

Como começar:**Configurar sua conta**

Clique abaixo para concluir a configuração e iniciar.

**Upload de tarefas**

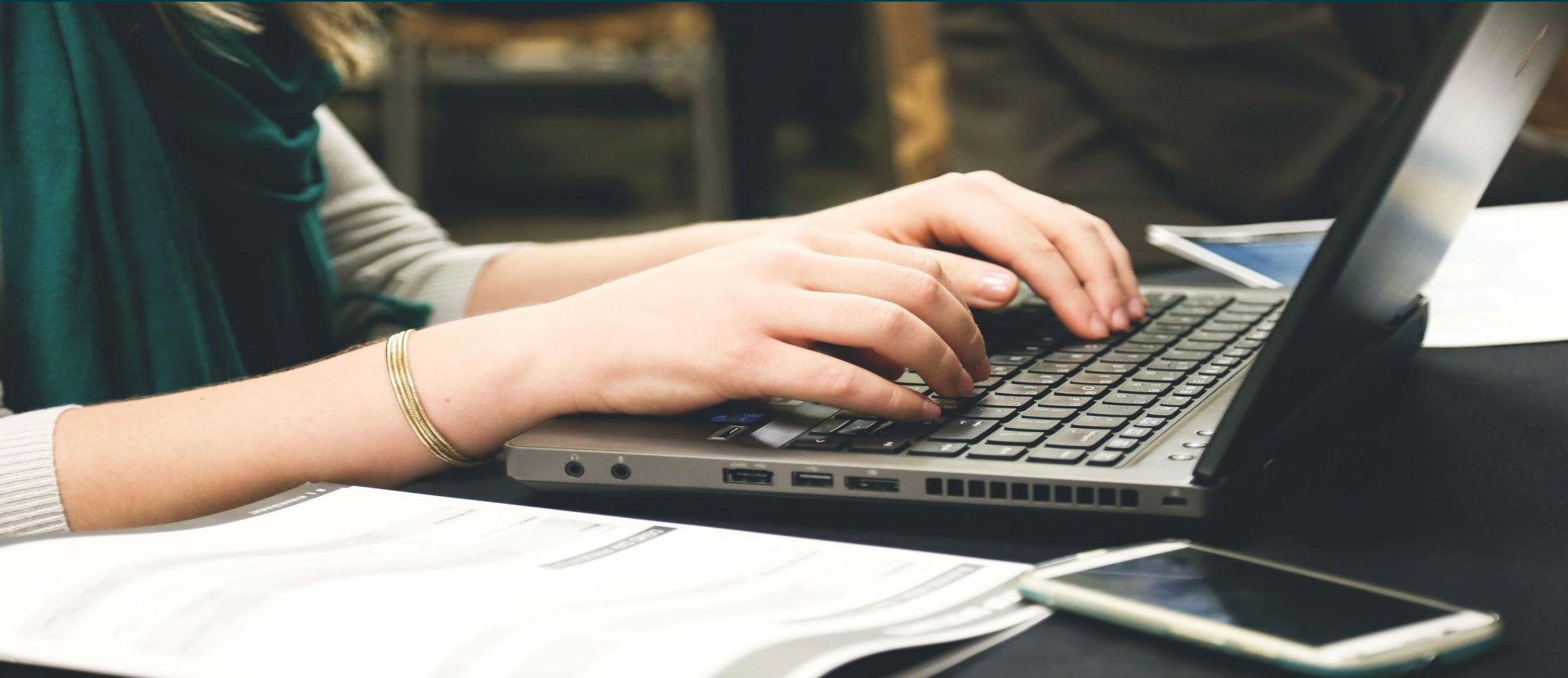
[Saiba como](#) organizar e visualizar relatórios.

**Uso de relatórios**

Avalie correspondências de texto e forneça outras informações que você pode colocar em ação imediatamente. Nós podemos ajudar.

Ferramenta **ao vivo**

Entrar na plataforma





O relatório de similaridades

Relatório de similaridades

Resumen de fuentes

23%
SIMILITUD GENERAL

16 repositorio.biblioteca... <1%
INTERNET

repositorio.bibliotecaorton.catie.ac.cr/bitstream/handle/11554/8504/Relacion_a_gua_comunidades_y_valoracion_economica.pdf

conocida como teoría del consumidor. Por su parte, en los valores de no uso se ubican los paradigmas de valor intrínseco, sociocultural y ecológico (Penna y Cristeche 2008). 4.10.1 Valores de uso **Los valores de uso** están ligados a la utilización directa o indirecta del recurso con el objeto de satisfacer una necesidad, obtener un beneficio económico, o la simple sensación de deleite. Las personas que utilizan los

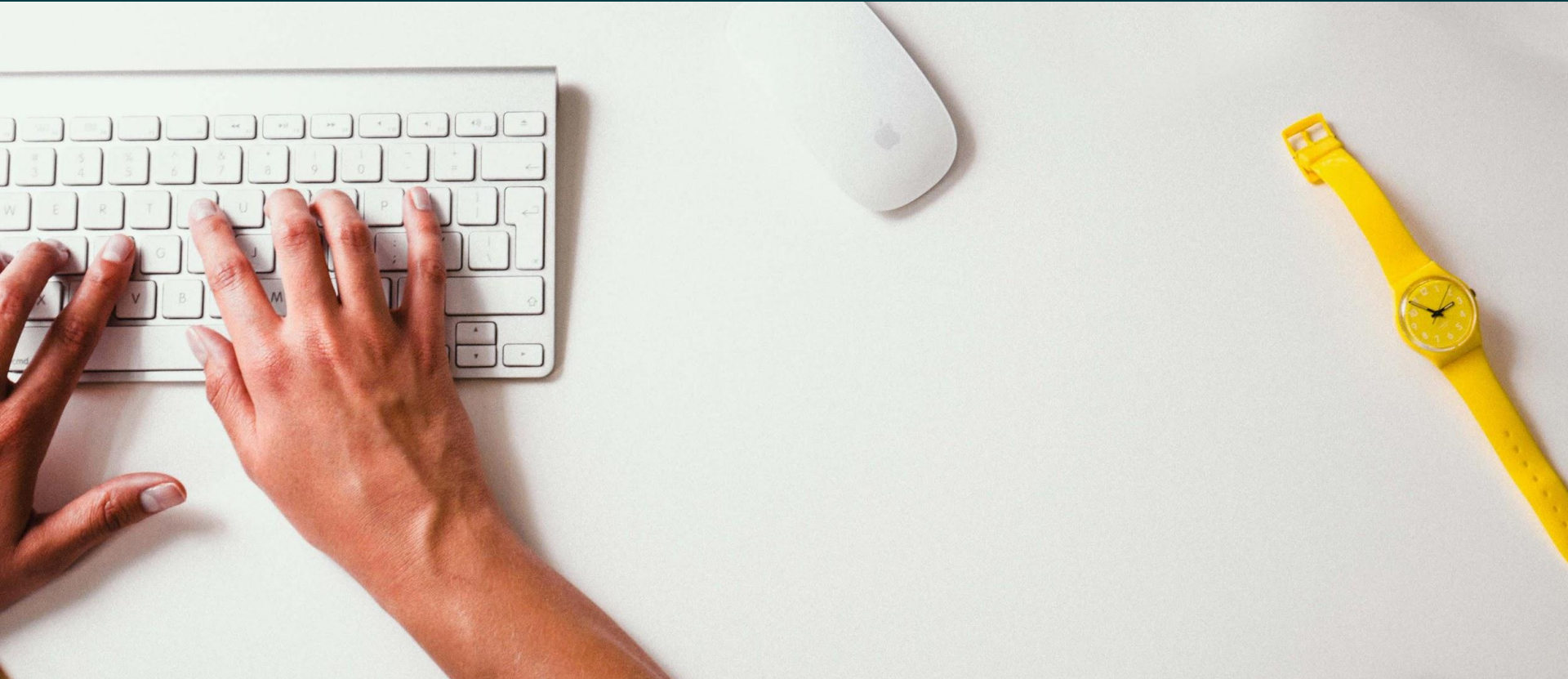
0 Marcas de alerta

23% Similitud general

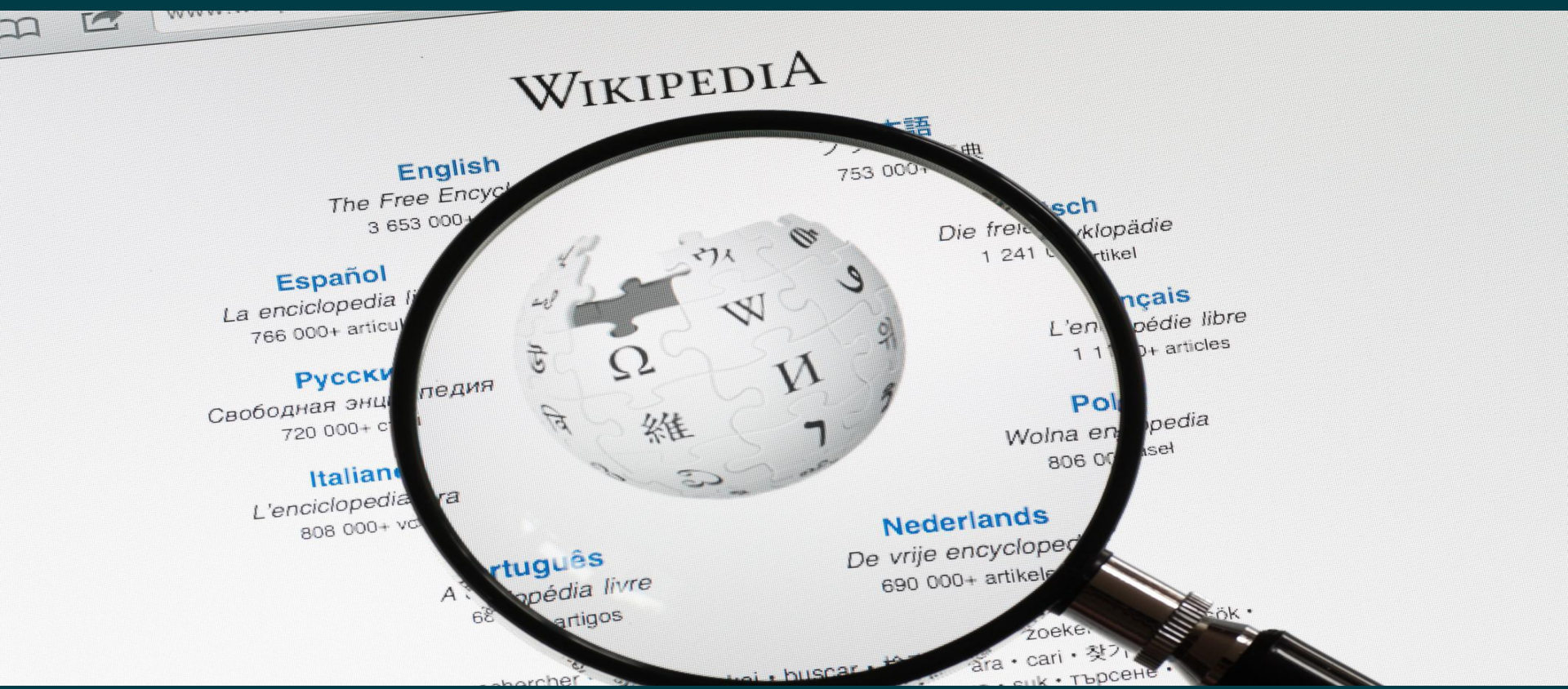
Detalles del documento

- Percentual de similaridade
- Plágio vs similaridade
- Lista de **fontes**

Entregar o documento



Determinar a credibilidade das fontes



Revisar o documento



Para que
servem os
filtros?



Por que o
percentual de
similaridade
pode sair
muito alto?



Na sessão de hoje...

- Revisamos rapidamente alguns aspectos teóricos sobre integridade acadêmica, similaridade e originalidade;
- Exploramos o Turnitin Originality nativo (<https://ifes.turnitin.com/>):
 - Envios pelo website nativo;
 - Envio via link direto;
 - Organização de pastas;
- Exploramos o relatório de similaridades com análise das fontes, dos filtros, além de marcas de alerta e detalhes do documento (metadados).
- Intro ao Moodle.



Muito obrigado!

Bruno Lancellotti

blancellotti@turnitin.com

Serviços Profissionais e Educacionais
Turnitin América Latina

© 2021 Turnitin LLC. All rights reserved.